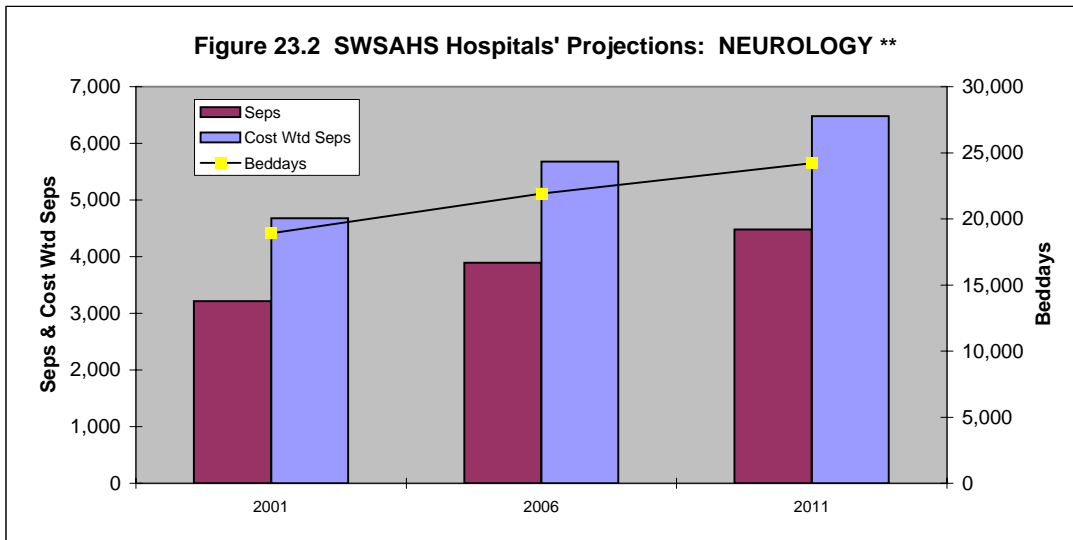


Table 23.4 SWSAHS Hospitals' Projected Activity to 2006 and 2011: NEUROLOGY**

	2001	2006	2011
Seps	3,217	3,894	4,482
Day only Seps	616	740	912
Cost Wtd Seps	4,679	5,676	6,480
Average Cost Wtd Sep	1.45	1.46	1.45
Beddays	18,913	21,923	24,224
Average LOS	5.9	5.6	5.4
Average LOS excl day only	7.0	6.7	6.5
Beds at 85% occupancy	61.0	70.7	78.1
Beds at 95% occupancy	54.5	63.2	69.9



* Data source: NSW Health *Flowinfo V 5.1*

** Data source: NSW Health *APPI 2003*

Acute Inpatients Aged 16+ Yrs

NB Cost wtd Seps are undiscounted

23.4

Neurology Services